

Evidence-Based Practice and Practice-Based Research: What Works in Public Health?

Nancy Winterbauer PhD, MS
FL Center for Public Health Practice-Based Research
Duval County Health Department

FPHA Regional Meeting, April 27, 2011

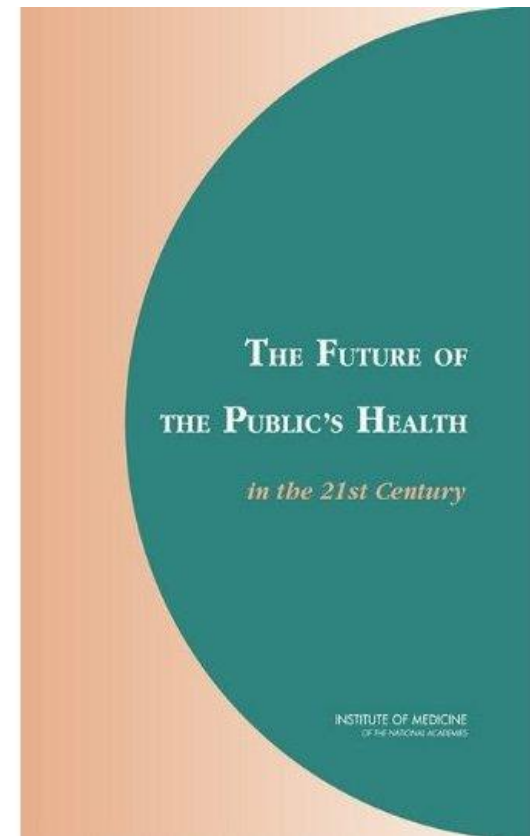
- ▶ Evidence-based public health practice (EBPH)
- ▶ Overview: Public health services and systems research (PHSSR)
- ▶ The RWJF Public-Health Practice-Based Research Network (PHPBRN) program
- ▶ Florida-PHPBRN: Aims, organizational structure, research studies and next steps

Florida Public Health



Practice-Based Research Network

“The Committee had hoped to provide specific guidance on the types and levels of workforce, related resources, and financial investments necessary to ensure the availability of essential public health services available to all of the nation’s communities. However, such evidence is limited, and there is no agenda or support for this type of research, despite the critical need for such data to promote and protect the nation’s health.”



What works in public health practice?

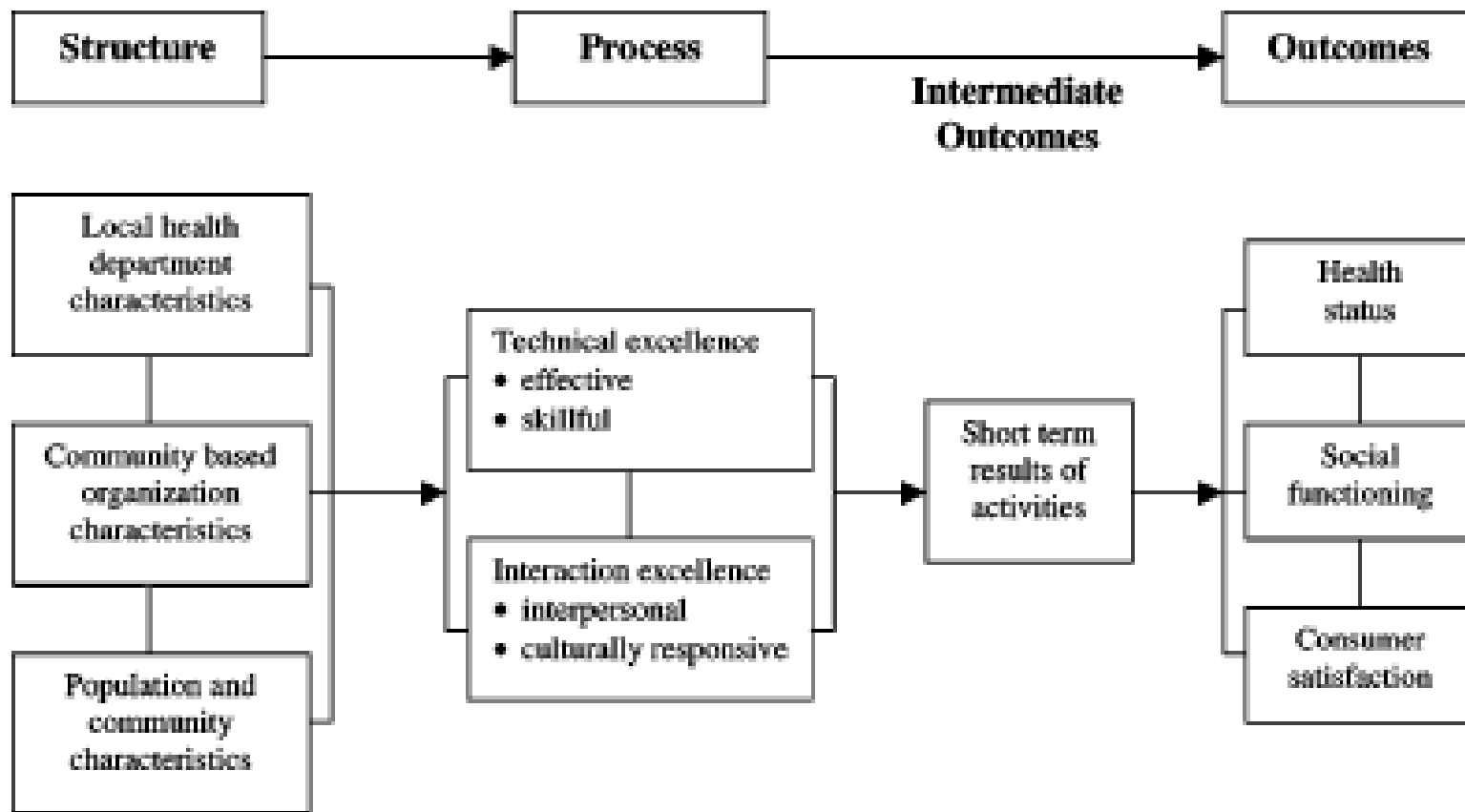
- ▶ “If we want more evidence-based practice, we need more practice-based evidence.” (Larry Green)
- ▶ **EBPH**
 - Best available peer-reviewed evidence;
 - Context;
 - Resources;
 - Population characteristics.



What is Public Health Services & Systems Research?

A field of inquiry examining the ***organization, financing, and delivery*** of public health services at local, state and national levels, and the ***impact*** of these activities on population health

Framework for Quality Assessment of Local Public Health Systems



Objectives

EBP

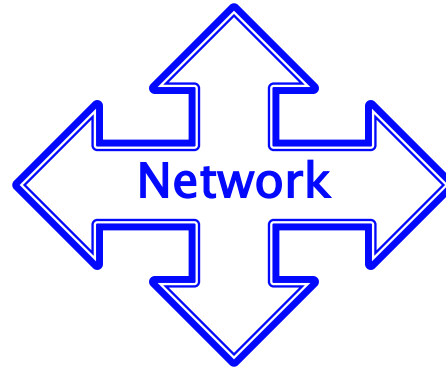
PHSSR

RWJF PHPBRNs

FL-PHPBRN



•Program Specific



•Structure
•Process



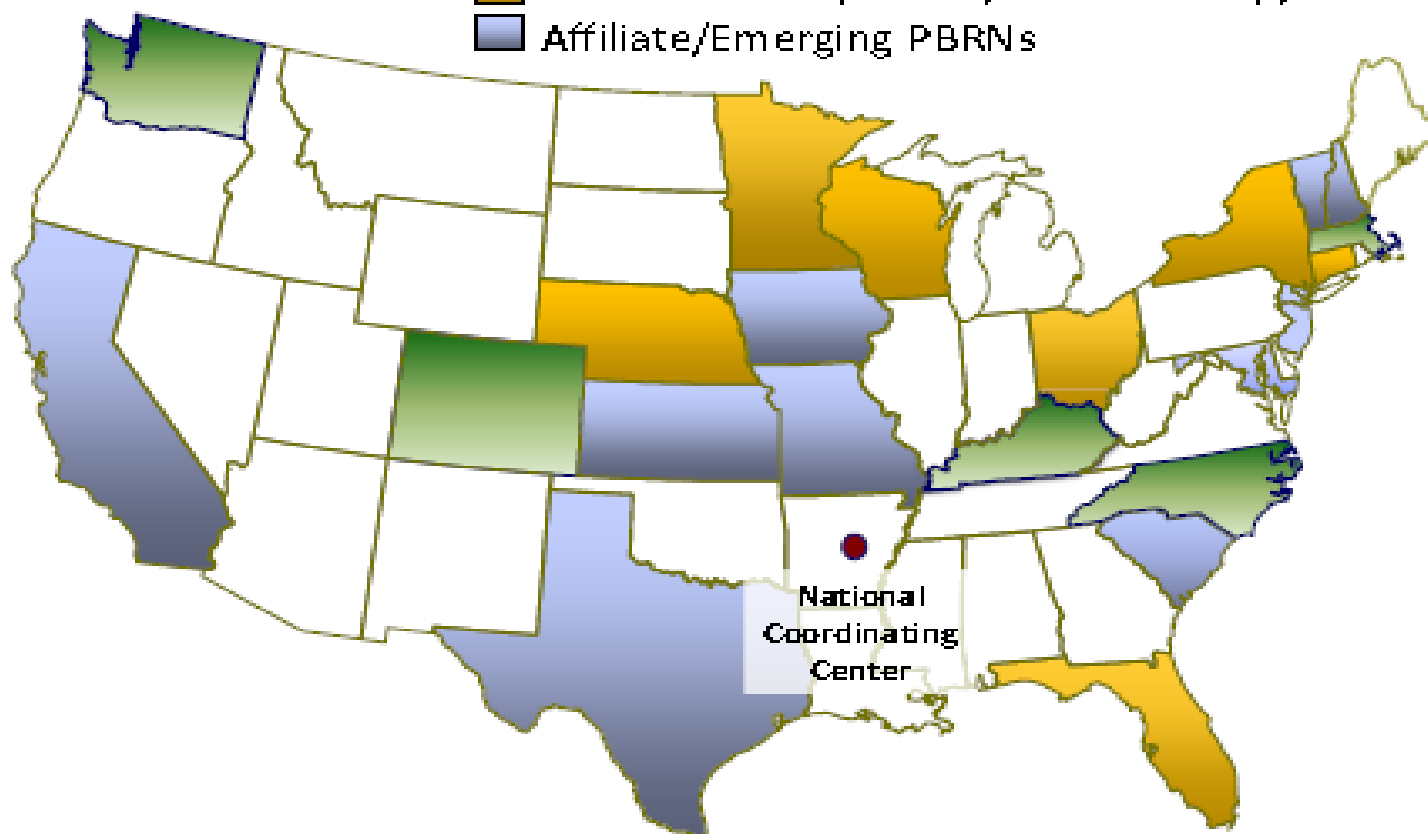
▶ Priority areas:

- Public health structure and organization
- Performance management and quality improvement
- Accreditation
- Workforce



The Robert Wood Johnson Foundation's Public Health PBRN Program

- First cohort (December 2008 start-up)
- Second cohort (January 2010 start-up)
- Affiliate/Emerging PBRNs



What is Practice-Based Research in Public Health?

- Research that tests effectiveness & impact of public health practices in real-world *public health settings*
- Research designed to address uncertainties and information needs of real-world public health *decision-makers*
- Research that evaluates the implementation and impact of *innovations in practice*
- Research that uses *observations generated through public health practice* to produce new knowledge

PHPBRN study types

- ▶ ***Comparative case studies:*** identify problems, examine innovations in service delivery
- ▶ ***Large scale observational studies:*** document practice variation across public health settings; identify causes & consequences
- ▶ ***Quality improvement studies:*** evaluate strategies for improving program operations & outcomes
- ▶ ***Policy evaluations and natural experiments:*** monitor the effects of key policy and administrative changes

Examples of PBRN studies

- Variation in **staffing levels** across local public health agencies and their influence on delivery of essential public health services
- Variation in the implementation and impact of **regionalized public health delivery models**
- Variation in local health department approaches to communicable disease reporting, and its impact on **surveillance and disease control efforts**
- Impact of a comprehensive state **public health reform law** on the organization and delivery of public health services in Colorado
- Causes and consequences of local variation in the public health **response to H1N1 influenza**
- Impact of **funding reductions** on the delivery of evidence-based public health programs and services
- Effectiveness of **quality improvement strategies** for diabetes prevention delivered through local public health agencies
- Influence of public health agencies on the **adoption of evidence-based obesity prevention** strategies by local community coalitions.

Benefits of PHPBRN

- ▶ Similar to other participatory research approaches
 - Relevance to practice
 - Rapid dissemination and implementation
 - Build academic – practice partnerships
 - Increase capacity to conduct research and evaluation
 - Funding opportunities

- ▶ The **specific aim** of the Florida Public Health Practice–Based Research Network (FL–PHPBRN) is to improve the health of Florida residents through a collaborative, statewide practice–based public health research network organized around regional academic health departments

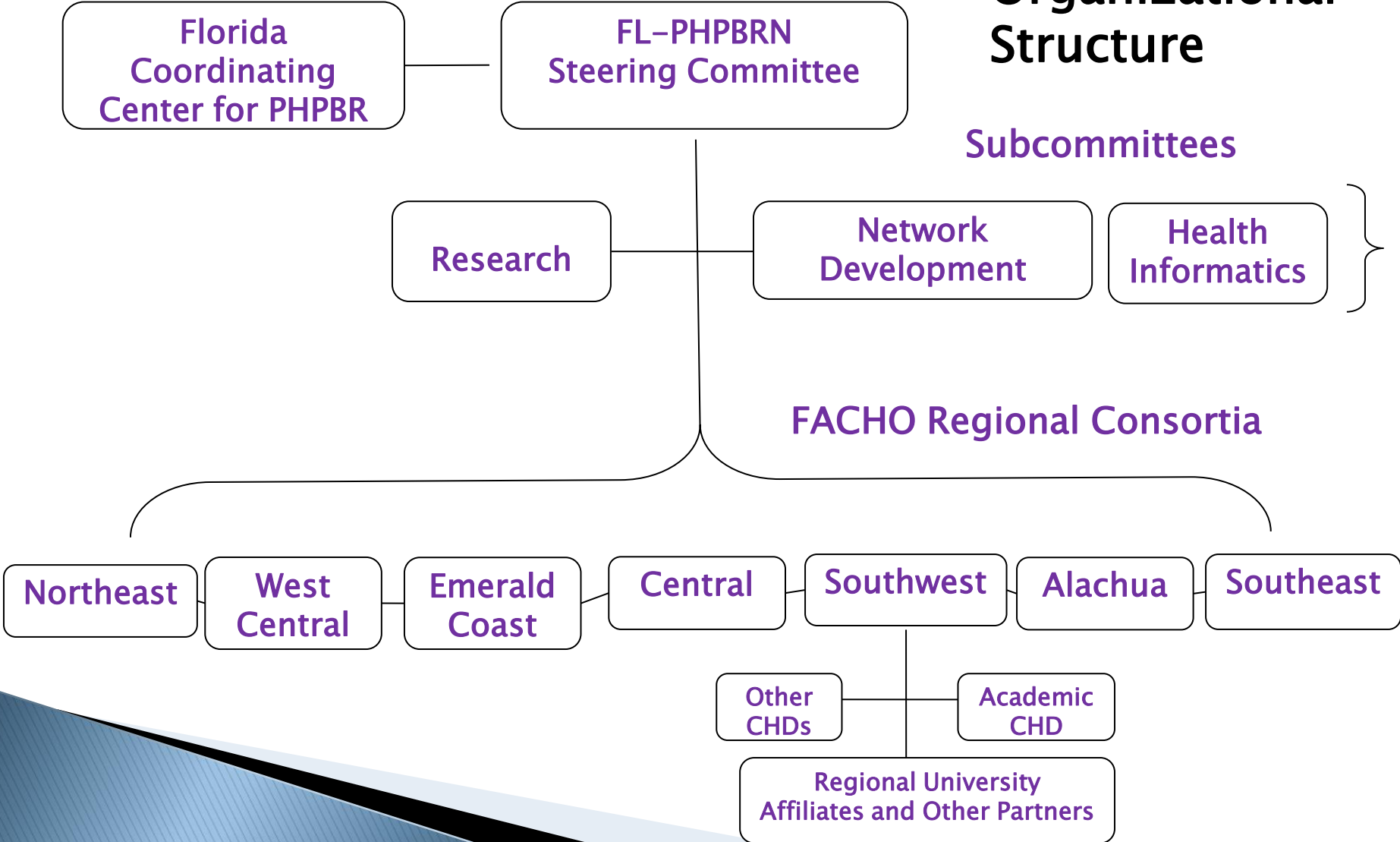
Florida Public Health



Practice-Based Research Network

- ▶ **FL-PHPBRN Organizational Structure**
 - Round II Grantee: DCHD, Florida Center
 - Steering Committee
 - FACHO, DOH (Vital Statistics, Performance Improvement, programs) academic (FIU, USF, UF, UNF, FSU) & community partners (FPHA, FPHI)
 - Chaired and staffed by Florida Center
 - Subcommittees
 - Research
 - Users group (development, data, data use)
 - Affinity groups
 - Network development
 - Health IT

FL-PHPBRN Organizational Structure



FL-PHPBRN Leadership

▶ FACHO Steering Committee Representatives

- Mike Napier, FACHO
- Winnie Holland / Barbara Locke, Alachua Consortium
- Paula Thaqi, SE Consortium
- Mary Burns (SWACHD)
- Belinda Johnson-Cornett, Central FL Coalition
- John Lanza/Karen Chapman, Emerald Coast Consortium
- Teresa Goodman (WCFPHA)
- Bonnie Sorenson, NEFL Consortium
- Bob Harmon, DCHD

▶ University Representatives

- Gil Ramirez, FIU
- Les Beitsch, FSU
- Mary Peoples-Sheps / Allyson Hall, UF
- Pam Chally, UNF
- Donna Petersen, USF

▶ Community Partners

- FPHA
- FPHI

▶ FL DOH Participants

- Meade Grigg
- Bill Sappenfield
- Betsy Wood / Ayasha Richardson
- Dennis Cookro

Establishing a Research Agenda

- ▶ Research Interest Study
- ▶ Most valuable studies for future of public health in Florida
 - Describe/define scope of CHDs in uncertain times
 - Best practices emphasize *performance* and (fiscal) *efficiency*
- ▶ CHD leadership interests
 - Policy : Outcomes;
 - Finance;
 - Workforce development
 - Existing workforce
 - Academic training : skills disconnect
- ▶ Gaps
 - Practice-based, “how to”
- ▶ Research Meeting

Current FL-PHPBRN Research

- ▶ Proof of Concept
 - Ten Essential Services (Bill Livingood, Co-I)
- ▶ Quick Strike Research
 - Variation in H1N1 Vaccine Campaign Approaches in Florida
 - Participation rate 78%
 - 20 CHDs (38%) rated vaccine acceptance as Very Good/Good; 32 CHDs rated vaccine acceptance as Average/Poor/Very Poor.
 - Vaccine acceptance was significantly associated ($p < 0.05$) with county size, CHD size, and total H1N1 per capita spending.
 - Significant associations at $p < 0.05$ also existed for vaccine acceptance and vaccine communication approaches, including CHD website, county/city website, and use of local news media.
 - Significant associations ($p < 0.05$) between vaccine acceptance and efficacy of communication approach were not found for use of radio media, billboards, changeable message road signs, magazine ads, or newspaper ads.

Current FL-PHPBRN Research

- ▶ County Health Rankings (Dr. Sorensen, Co-I)
- ▶ Objectives
 - Best practices
 - Metrics
- ▶ Methods
 - Formative Research
 - Survey
 - Case studies

Florida Public Health



Practice-Based Research Network

FL-PHPBRN Next Steps

- ▶ Establish research affinity groups – need leads with support from administrative center
 - School policy – obesity
 - School – CHD relationships
 - STDs
 - Winnable battles
- ▶ Summer research meeting
- ▶ Sustainability
 - Shift to community-based administrative center
 - Continue to promote the network throughout DOH
 - Recruit faculty and students

▶ Evidence-Based Practice and Practice-Based Research: What Works in Public Health?

- To answer this question
 - Funding
 - Methods – e.g. comparability
 - Involvement of practitioners is key or risk of becoming an academic exercise
 - PBRNs provide opportunity to establish best or promising practices to guide decision-making in public health practice
 - Requires your experience and participation

Thank you!



RWJF FL-PHPBRN Principal Investigators:

- Nancy Winterbauer, PhD, MS
Director, FL Center for Public Health Practice-Based Research

Nancy_Winterbauer@doh.state.fl.us

904-253-2056

- William Livingood, PhD

William_Livingood@doh.state.fl.us

Project Director:

- ▶ Susan Coughlin, MPH
Susan_Coughlin@doh.state.fl.us

